



## Introduction

### Thank you for purchasing the Multi-Converter!

The Multi-Converter is a device that enables users of Brother, Babylock, Bernina Deco or Simplicity, Husqvarna, Viking, Janome 8000/9000, Elna, New Home, Kenmore, Bernina Artista, Fairyland, Pfaff, and Singer embroidery machines to read and write embroidery cards.

The device has totally four card slots. Each slot can read and write cards from the following embroidery machines:

**Slot A :** Singer (XL-100, XL-1000)

**Slot B :** Pfaff, Bernina Artista, Fairyland

**Slot C :** Janome, Elna, New Home, Kenmore

**Slot D :** Brother, Bernina Deco, Babylock, Husqvarna, Viking



# Embroidery Cards

There are basically three types of embroidery cards:

1. Pre-programmed ROM cards
2. Pre-programmed flash cards
3. Blank cards

Either an embroidery machine or a card reader can read ROM cards. Restrictions might apply as a result of copyrights where a card can only be read by an embroidery machine.

Flash cards can be read as if they were ROM cards; the same restrictions can apply as for ROM cards. The main difference between flash cards and ROM cards is that flash cards can be written to with a card-writer that can write flash cards. As far as the embroidery machines are concerned both types of cards are the same.

Brother manufactures two types of blank cards: Brother blank cards and flash blank cards. Brother blank cards contain a fixed ROM area for administrative purposes and a user area that can be written by a card writer; flash blank cards are 100% writable. Some of the space on flash blank cards is used to store the administrative data mentioned earlier. Other manufacturers use 100% writable cards.

## Card Capacity

The maximum capacity of any embroidery card is 1 Megabyte (1048576) bytes. Pre-programmed Brother Cards come in 2 capacities: 1 Megabyte or 512 Kilobyte (524288) bytes. The Brother blank card has a fixed ROM area of 512 Kilobyte and a user area of 128 Kilobyte. Pre-programmed Viking cards are normally 512 Kilobyte. The Viking blank card is a 256 Kilobyte card. Flash blank cards come in sizes of 512 Kilobyte and 1 Megabyte.

The number of designs that can be stored on an embroidery card is primarily dependent on the total number of stitches in the designs and a bit on the number of colors used in the designs. There is also a little bit of administrative overhead. As a rule of thumb one can say that a Brother blank card can hold approximately 55.000 stitches, a 512 Kilobyte card can hold approximately 200.000 stitches and a 1 Megabyte card can hold 450.000 stitches. For Viking blank cards the figures are 130.000 for a 256 Kilobyte card and 260.000 for a 512 Kilobyte card.

The Multi-Converter supports the reading of embroidery cards that can be read by the Brother Card writer module and the writing of Brother blank cards as well as most flash cards. The Multi-Converter currently supports cards built using 28F010 (Brother blank cards), 28F020 (Viking blank cards), 29F040, 29F400 (Brother blank cards), 28F004 (Brother blank cards), 29F080, 28F008SA, 49F008, 29F800, and 29C040, which is used by Pfaff and Bernina Artista.

Flash cards containing patterns can be reused for writing. Designs already present on the cards can be read using the Multi-Converter utility and stored on your computer in a safe place. After that you can write a new collection of designs to the flash card. Later on the original designs can be restored to the embroidery card using the Multi-Converter utility.

The Multi-Converter also provides information about embroidery cards including the chip type used to build the card.

# Cards that work with the Multi-Converter

Embroidery cards normally contain only a single chip.

Embroidery cards come in 4 different form factors. The form factor of the card needs to match your embroidery machine. Cards with a non matching form factor will not fit in the embroidery machine.

The different form factors are for:

- > Brother, Babylock, Bernina Deco, Simplicity, Viking, Husqvarna
- > Pfaff, Artista
- > Janome, Elna, New Home, Kenmore
- > Singer

You might notice that some 512K cards appear in multiple lists. Cards that have equal chip types are actually the same. For example: 512K cards can be used for both Brother and Viking embroidery machines. This is independent of the chip type.

## Brother, Babylock, Bernina Deco, Simplicity

Manufacturer	Product No	Title	Card Type	Card Size
Vikant	Ultimate Card	Blank card	AMD Am29F080B	1M
Brother	XA0154-001	Blank card	Intel 28F010	128K
Brother	XA0154-001	Blank card	AMD Am28F010	128K
Brother	XA0154-001	Blank card	Intel E28F004	512K
Brother	XC0401-001	Blank card	Macronix MX29F400T/B	512K
Viking	4124176-01	Blank card	Intel 28F020	256K
Great Notions	BHMC-FLASH	Blank card	SGS M29F040B	512K

OESD	MCARD-BV	Blank card		512K
Centennial	x	Blank card	Hyundai HY29F040	512K
Brother	#43	Victorian	Fujitsu MBM29F800T	1M
Brother	#44	Lace	Fujitsu MBM29F400T	512K
Brother	#45	Fancy Work	Fujitsu MBM29F400T	512K
Brother	#46	Australian Animals	Fujitsu MBM29F400T	512K
Brother	#47	Butterfly	Fujitsu MBM29F400T	512K
Brother	#48	Australian Flowers	Fujitsu MBM29F400T	512K
Brother	#49	Folk Art	Macronix MX29F400T/B	512K
Brother	#50	Fairy and Floral	Fujitsu MBM29F800T	1M
Brother	#51	Paper Dolls	Fujitsu MBM29F800T	1M
Brother	#52	Bears	Macronix MX29F400T/B	512K
Brother	#53	Scenes	Fujitsu MBM29F800T	1M
Brother	#54	Tea Time	Fujitsu MBM29F800T	1M
Brother	#55	Gardening	Fujitsu MBM29F800T	1M
Brother	#56	Asian	Fujitsu MBM29F800T	1M
Brother	#57	Christmas Time	Macronix MX29F400T/B	512K
Brother	#58	Quilting Designs	Macronix MX29F400T/B	512K
Brother	#60	Summertime Fun	Fujitsu MBM29F800T	1M
Brother	#61	Blouse Embellishment	Fujitsu MBM29F800T	1M
Brother	#62	Zodiacs	Macronix MX29F400T/B	512K
Babylock	BLEC-C1	Tapestry	SGS M29F040B	512K
Babylock	BLEC-C2	Sewing	SGS M29F040B	512K
Babylock	BLEC-C3	Cross-Stitch	SGS M29F040B	512K

Babylock	BLEC-C4	Fall Holidays	SGS M29F040B	512K
Babylock	BLEC-C5	Cutwork	SGS M29F040B	512K
Babylock	BLEC-C6	Noah's Ark	SGS M29F040B	512K
Babylock	BLEC-C7	Victorian Tapestry	Hyundai HY29F080	1M
Babylock	BLEC-C8	Religious Crosses	SGS M29F040B	512K
Babylock	BLEC-C9	Home Decorating	AMD Am29F080B	1M
Babylock	BLEC-C10	Betty Boop	Intel 28F008SA	1M
Babylock	BLEC-C11	Butterflies and Flowers	Intel 28F008SA	1M
Babylock	BLEC-C12	Blondie	SGS M29F040B	512K
Babylock	BLEC-C13	Back To School	Intel 28F008SA	1M
Babylock	BLEC-C14	Art Deco	Atmel AT49F008	1M
Babylock	BLEC-C15	Christmas Collection	Atmel AT49F008	1M
Babylock	BLEC-C16	Mike Abrams Collection I	Atmel AT49F008	1M
Babylock	BLEC-C18	Christmas 2001	Atmel AT49F040	512K
Babylock	BLEC-C19	Elegant Baby Designs	Atmel AT49F040	512K
Babylock	BLEC-C22	Mice & More	Atmel AT49F008AT	1M
Brother Boutique	331023	Nautical 2	AMD Am29F040B	512K
Brother Boutique	331035	Large Designs 1	AMD Am29F040B	512K
Brother Boutique	331036	Large Designs 2	AMD Am29F040B	512K
Great Notions	BMC-101	Floral Collection I	SGS M29F040B	512K
Great Notions	BMC-102	Christmas Collection I	SGS M29F040B	512K
Great Notions	BMC-104	Birds & Butterflies Collection I	SGS M29F040B	512K
Great Notions	BMC-105	Fall Holidays Collection I	SGS M29F040B	512K
Great Notions	BMC-106	Childrens Collection I	SGS M29F040B	512K
Great Notions	BMC-108	Cross Stitch Collection I	SGS M29F040B	512K
Great Notions	BMC-109	Cutwork Collection I	SGS M29F040B	512K





Great Notions	BNMC143	Everyday with Mary Engelbreit	Atmel AT49F008	1M
Great Notions	BNMC145	Debbie Mumm's Baby Oh Baby	Atmel AT49F008	1M
Bernina	123	Precious Moments	Intel 28F008SA	1M
Bernina	126	Lace & Romantic Designs	Intel 28F008SA	1M
OESD	B1001	Butterflies	Intel 28F008SA	1M
OESD	B1002	Birdhouses	Intel 28F008SA	1M
OESD	B1003	Cuddly Critters	Intel 28F008SA	1M
OESD	B1005	Always a Holiday	Intel 28F008SA	1M
OESD	B1006	Down Home Christmas	Intel 28F008SA	1M
OESD	B1007	Butterflies	Atmel AT49F008	1M
OESD	11109	Carousel	Atmel AT49F008	1M
Dakota	970059		AMD Am29F040B	512K
Simplicity	SMC1	Sampler card	Hyundai HY29F040	512K
Walmart	XC1815-001	Animals	Fujitsu MBM29F400T	512K
Walmart	XC1819-001	Christmas	Fujitsu MBM29F400T	512K
Walmart	XC1704-001	Floral 1	Fujitsu MBM29F400T	512K
Walmart	XC1708-001	Lace	Fujitsu MBM29F400T	512K
White 3300	103	Butterflies	SGS M29F040B	512K
White 3300	105	Teddy Bears	SGS M29F040B	512K



## Pfaff

Manufacturer	Product No	Title	Card Type	Card Size
Pfaff		Creative card	Atmel AT29C010A	128K
Pfaff	#16	Floral and Script Monograms	Fujitsu MBM29F040	512K
Pfaff	#19	Pets	Fujitsu MBM29F040	512K
Pfaff	#24	ABC	Fujitsu MBM29F040	512K
Pfaff	#28	Scattered Flowers	Fujitsu MBM29F040	512K
Pfaff	#29	Quilt	Intel 28F020	256K
Pfaff	#39	Wild animals	Fujitsu MBM29F040	512K
Pfaff	#41	Martha Pullen	Fujitsu MBM29F040	512K
Pfaff	#43	Coat of arms	Fujitsu MBM29F040	512K
Pfaff	#44	Country life	Fujitsu MBM29F040	512K
Pfaff	#45	Birds	Fujitsu MBM29F040	512K
Pfaff	#48	Pattern combinations	Fujitsu MBM29F040	512K
Pfaff	#49	Big Hoop Pattern Combinations	Fujitsu MBM29F040	512K
Pfaff	#50	Quilt	Intel 28F020	256K
Pfaff	#53	Patterns Combinations	Fujitsu MBM29F040	512K
Pfaff	#55	Australia	Fujitsu MBM29F040	512K
Pfaff	#57	Applique	Fujitsu MBM29F040	512K
Pfaff	#62	Comics	Fujitsu MBM29F040	512K
Pfaff	#63	Asia	Fujitsu MBM29F040	512K
Pfaff	#67	Combinations Christmas	Fujitsu MBM29F040	512K
Pfaff	#71	Monograms 1	Fujitsu MBM29F040	512K
Pfaff	CF	7560	Fujitsu MBM29F040	512K
Pfaff	PP	Philip Pepper Special Card	Fujitsu MBM29F040	512K

Pfaff	#300	Creative card	Fujitsu MBM29F016A	2M
Pfaff	#300	Fantasy	Fujitsu MBM29F017A	2M
Pfaff	#305	Asia	Fujitsu MBM29F080A	1M
Pfaff	#308	Ethno	Fujitsu MBM29F080A	1M
Pfaff	#309	Flowers	Fujitsu MBM29F080A	1M
Pfaff	#310	Lace	Fujitsu MBM29F040	512K
Pfaff	#312	Hardanger	Fujitsu MBM29F080A	1M
Great Notions	PFMC-CT	Cherised Teddies	SGS M29F040B	512K
Pfaff		Creative card	Atmel AT29C040	512K
Pfaff		Creative card	SRAM	512K
Bernina		Personal Design Card	Atmel AT29C040A	512K
SSHS	PA29C040	blank	Atmel AT29C040A	512K
SSHS	PA29F040	blank	SGS M29F040B	512K
Great Notions	AMPC-FLASH	blank	SGS M29F040B	512K
OESD	MCARD-AP	blank		512K
Centennial		blank	SRAM	512K
SSHS	P29F032	blank	AMD Am29F032	4M

### Bernina Artista

Manufacturer	Product No	Title	Card Type	Card Size
Bernina		Personal Design Card	AtmelAT29C040A	512K
SSHS	PA29C040	blank	AtmelAT29C040A	512K

**Rewritable cards:**

Manufacturer	Product No	Title	Card Type	Card Size
Great Notions	AMPC-FLASH	blank	SGS M29F040B	512K
OESD	MCARD-AP	blank		512K
Bernina	524	Debbie Mumm Everyday	SGS M29F080A	1M
Bernina	527	Sue Box Beautiful Borders	AtmelAT49F008AT	1M
Bernina	535	Christmas	AtmelAT49F008AT	1M
Bernina	541	Leslie Beck Holiday	AtmelAT49F008AT	1M
Bernina	547	Current Critters	AtmelAT49F008AT	1M
Bernina	548	Carol Endres Christmas	AtmelAT49F008AT	1M
Bernina	550	Crewel Embroidery	AtmelAT49F008AT	1M
Bernina	558	Debbie Mumm's Quilt Shop	AtmelAT49F008AT	1M
OESD	A1015	Animal Instincts	AtmelAT49F008AT	1M

**Janome, Elna, New Home, Kenmore**

Manufacturer	Product No	Title	Card Type	Card Size
Janome	241801105	Scan 'n Sew II	Fujitsu MBM29F040	512K
Janome		Scan 'n Sew I	ROM+RAM	128K
Kenmore	241801105	Card for Scanner	Fujitsu MBM29F040	512K
Great Notions	ENHMC-FLASH	blank	Hyundai HY29F040A	512K
OESD	MCARD-J	blank		512K

### Singer

Manufacturer	Product No	Title	Card Type	Card Size
Singer	387166	Original Design Card	Fujitsu MBM29F040	512K

### Rewritable cards:

Manufacturer	Product No	Title	Card Type	Card Size
Great Notions	SGMC-FLASH	blank	AMD Am29F040B	512K

# Applications

The Multi-Converter is designed with two primary goals.

1. develop a device that can write more designs to a card than the current card writer modules can.
2. develop a device for users that don't design, but only stitch out designs.

## **More designs**

The Multi-Converter can write to flash embroidery cards that have a larger capacity. As a result of this the user can write more designs to an embroidery card.

## **Read/write only**

Various users do not digitize themselves, but buy ready-made patterns from pattern vendors or alternatively download free designs from the worldwide web. Those users only need the Multi-Converter and its utility in order to write designs to an embroidery card.

## **Additional applications**

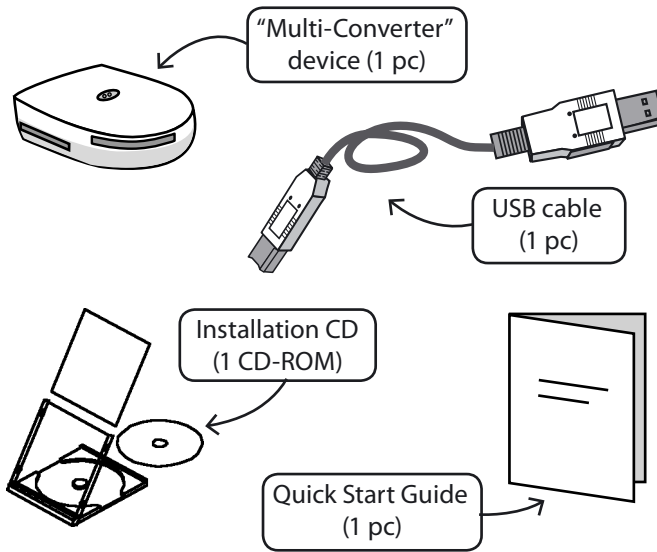
Large designs can be split by packages into designs that will fit on Brother blank cards. The advantage here is that multiple of those split designs can be stored on a single flash card.

Pattern designers can create their own collections and distribute them on cards instead of floppies or email or other media.

# Contents of Package

The Multi-Converter package contains the following items:

- > **One (1) “Multi-Converter” Device**
- > **One (1) USB Cable**
- > **One (1) Installation CD** with the Multi-Converter utility
- > **One (1) Quick Start Guide** for the “Multi-Converter”



The CD also contains an extensive manual in PDF format. Acrobat Reader must be installed on your PC in order to view and print this file.

In case not, please install it from the CD



## Note

If you want to connect the Multi-Converter device to a Serial COM Port, you have to purchase a serial cable and an AC Adaptor. These accessories can be found at any electronics or computer store and their specifications are:

### 1. Serial cable.

This is standard serial 9-pin male/9-pin female cable. Due to high baudrate used we recommend length to be limited to max 3 meters. (Baudrate used on serial RS232 is 115.2 kb)

### 2. AC adaptor.

Specification for this device is:  
Input: according to local mains voltage  
Output: DC 9 Volt nominal 250 mA minimum output current.  
Connector: Round DC plug 2.1 mm. + centre - outside.  
Typical devices are 9 VDC 300mA.

USB connection does not require an AC adaptor as the device is powered directly from the PC.



# System Requirements

- > PC with PENTIUM II or faster processor
- > Windows OS: Windows 95/98/2000/ME/XP
- > 64MB of RAM (128MB or more recommended)
- > CD-ROM Drive
- > 10MB (or more recommended) of available hard-disk space for installation
- > Color standard (640x480 pixels, 16 colors) VGA adapter connected with a color VGA monitor (1024x768 pixels; 65,000 colors recommended)
- > Microsoft compatible mouse

# Setting up the device

Please follow the steps described below in order to set up the device:

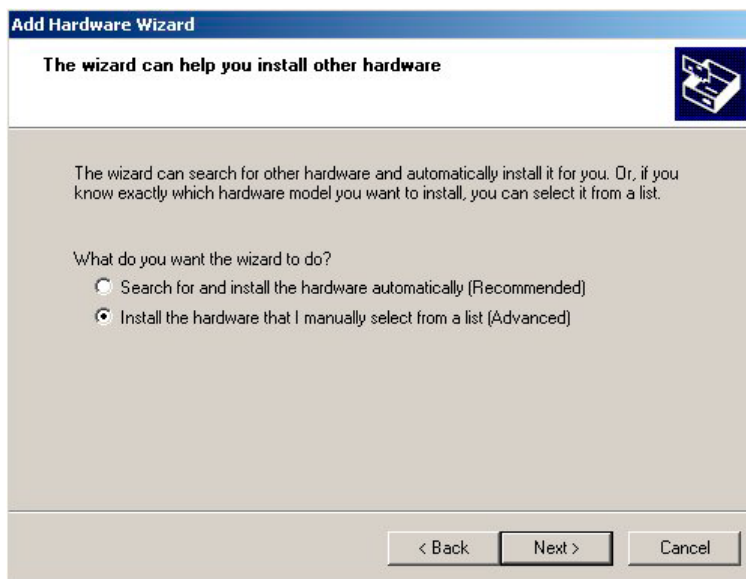
1. Unpack the Multi-Converter package and locate the device.
2. Locate the USB cable from the package. Connect the cable to the device and then to a free USB port, with the computer turned off.
3. Turn on the computer.
4. Check now whether one of the leds is on. The Multi-Converter will do a power on self-test. The results of this test are displayed on the leds. The first led will flash and then the other will follow.
5. When Windows start, insert the Installation CD.
6. The Autoplay Wizard will automatically prompt you to proceed to the software installation. Click on "Cancel" to continue with the installation of the USB drivers.
7. The device will be detected automatically and the "Add New Hardware Wizard" will come up. Click "Next".

## Note

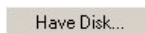
*If you do not have any free USB ports on your computer, you can use a USB hub, a device that connects to a USB port and makes more USB ports available. This device can be bought from any electronic or computer store.*



8. Select “Install the hardware that I manually select from the list (Advanced)” and press “Next”.



9. On the next screen that comes up click on the “Have Disk...” button.





# Installing the Multi-Converter Utility

Please follow the steps described below in order to install the Multi-Converter Utility:

1. Turn on the computer
2. Insert the Installation CD included in the package
3. The Installation Dialog will come up automatically. If it does not start, go to My Computer -> CD Rom Drive (where the CD is mounted, e.g. D:) and double-click on setup.exe
4. Follow the steps as instructed by the setup screens
5. A shortcut icon will be set on your desktop, from where you can start the Multi-Converter Utility

## Note

*The Multi-Converter is fully compatible with all popular Windows platforms, Windows 95®, Windows 98®, Windows 2000®, Windows ME® and Windows XP®.*

# Configuration

The Multi-Converter requires little to no configuration. The configuration that might be required is the Serial Port configuration. The initial configuration of Multi-Converter is COM4 and USB. If for whatever reason COM4 is not available for Multi-Converter, the configuration dialogue will be displayed and you can configure both Serial Port and interface to match your configuration. Only usable ports will be displayed. USB users can find out to which Serial Port the Multi-Converter is connected by starting the Multi-Converter utility, going to Settings -> Hardware, pressing the "Search" button and in the new window that appears press the "Auto" button. This will automatically detect the Serial Port and Port Type that the Multi-Converter device is connected.









# User's Guide

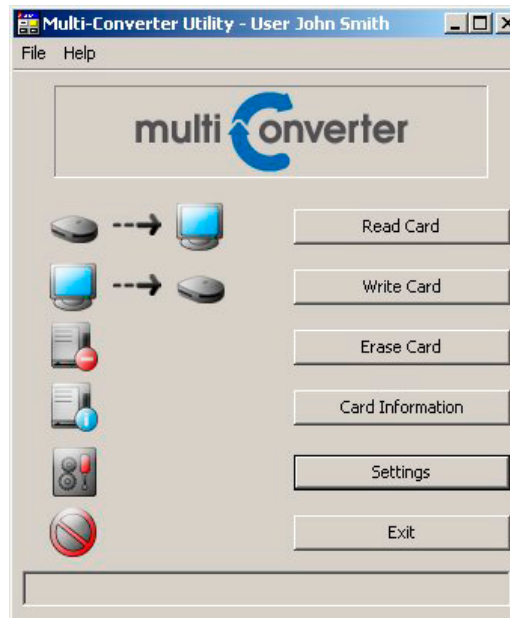
# multi nverter

# Starting the Multi-Converter utility

When you start the Multi-Converter Utility, you enter the basic menu of the utility.

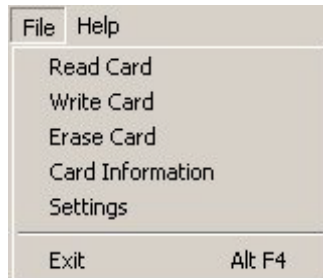
## Note

*If you do not have the Multi-Converter device connected on your PC, or you did not configure its port settings properly, the "Erase Card" and the "Card Information" buttons will be deactivated. The basic menu is the one shown in the screen below.*

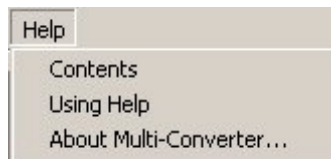


This menu contains all the basic functions of the Multi-Converter:  
Read Card, Write Card, Erase Card, Card Information, Settings  
and Exit.

These functions are also included in the File Menu



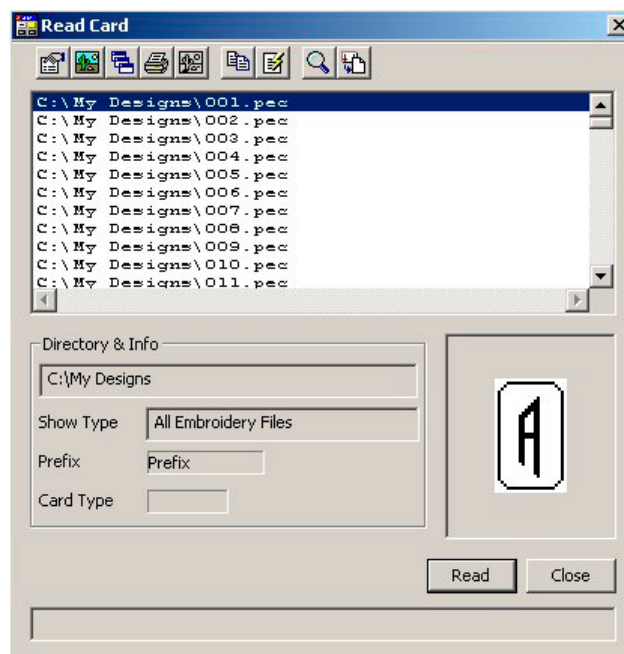
The Help menu contains the options shown here.



## Read Card

The Read Card option enables you to read sewing files from any embroidery card. These can be saved into other media files like a hard disk, a floppy disk, a SmartMedia card etc.

The main window of the Read Card option is shown below.



This window consists of the main toolbar, the file catalog, the directory & info box, the preview box, the Read and the Close buttons, and the status bar.

## Main Toolbar



The main toolbar contains all the functions related to reading designs from an embroidery card.



**Properties:** It shows information on the selected design, and it enables the user to save it in different formats



**Graphics:** This option opens up a new window where all the designs included in the catalog are shown as images



**Catalog:** The Catalog option creates a catalog of all the designs included in the directory, in an HTML format



**Print:** It prints a screenshot of the screen shown currently



**Bitmaps:** This option opens up a new dialog with an overview of the bitmaps of the designs included in the directory (it only works for PES files)



**Clip:** This option makes a clip of the catalog of files for Notepad



**Transfer:** By pressing “Transfer”, the selected design file is opened automatically by the predefined program (e.g. Stitch & Sew)



**Browse:** The Browse option enables the user to set the directory where the files will be saved (default directory C:\My Designs), and a prefix name for the files

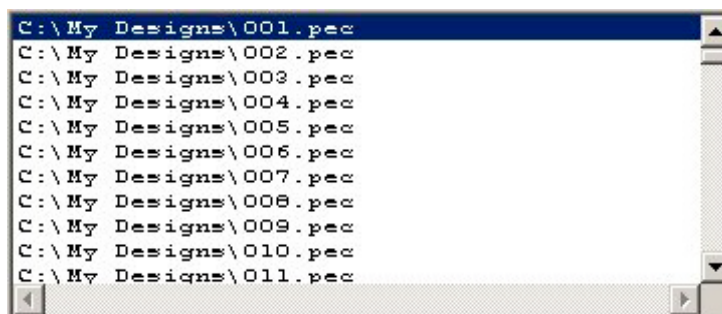


**Read Card:** It reads the files from inserted card, and it saves them in the defined directory, using the defined prefix name

### Note

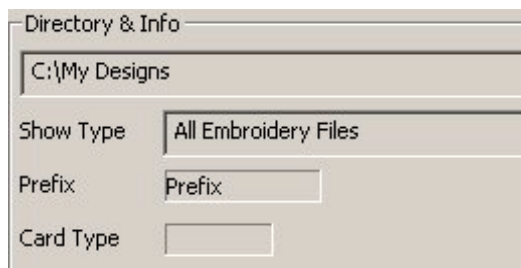
*You can only insert one card at a time to the Multi-Converter. Otherwise the device will not be able to read the files from any card.*

## File Catalog



The file catalog shows all the files that exist in the selected directory. Note that if you define a directory that already contains files, in order to read and save the files from a card, all these files will appear on the catalog box above.

## Directory & Info Box



This box shows the directory in which the files will be saved, the type of embroidery files that will be read, the prefix name and the type of card inserted.

## Preview Box



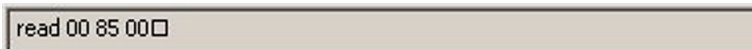
The preview box shows a preview of the selected design file. The image is in black & white, just enough to give you a clue of what the design is about.

## Read and Close Buttons



Although the “Read Card” and the “Close” options are already available on the toolbar and on the top right corner of the window, these buttons exist for reasons of ease of use.

## Status Bar



The status bar shows the progress in the process of reading an embroidery card. This bar shows information only when card reading is in progress.



## How to read designs from an embroidery card

1. With the device plugged into your computer, start the Multi-Converter utility
2. Insert the card that you want to read from, into the corresponding slot. Each slot reads specific types of embroidery cards:

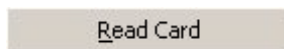
**Slot A :** Singer (XL-100, XL-1000)


**Slot B :** Pfaff, Bernina Artista, Fairyland

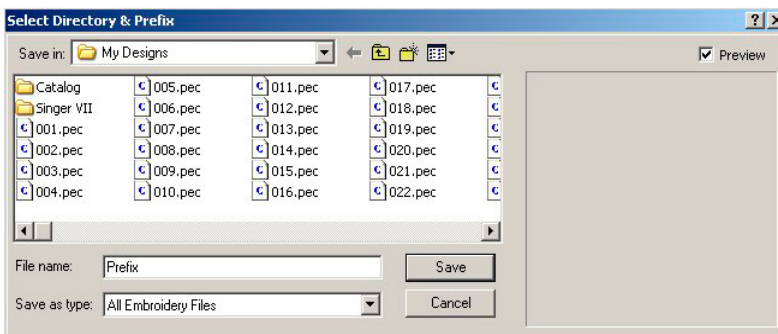
**Slot C :** Janome, Elna, New Home, Kenmore



**Slot D :** Brother, Bernina Deco, Babylock, Husqvarna, Viking

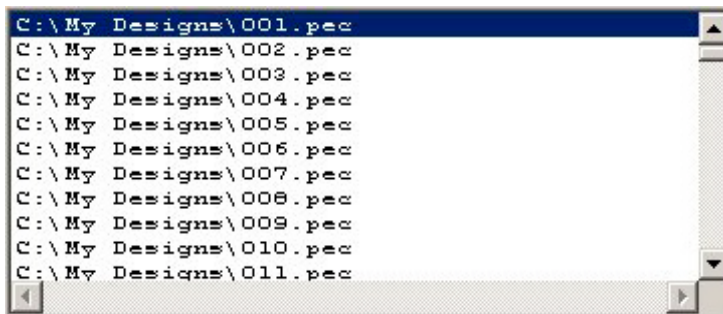
3. Press the “Read Card” button from the main menu




4. When the “Read Card” box appears, press “Browse”  and set the directory where you want the design files to be saved from the card, and also the prefix name that you want and press “Save”



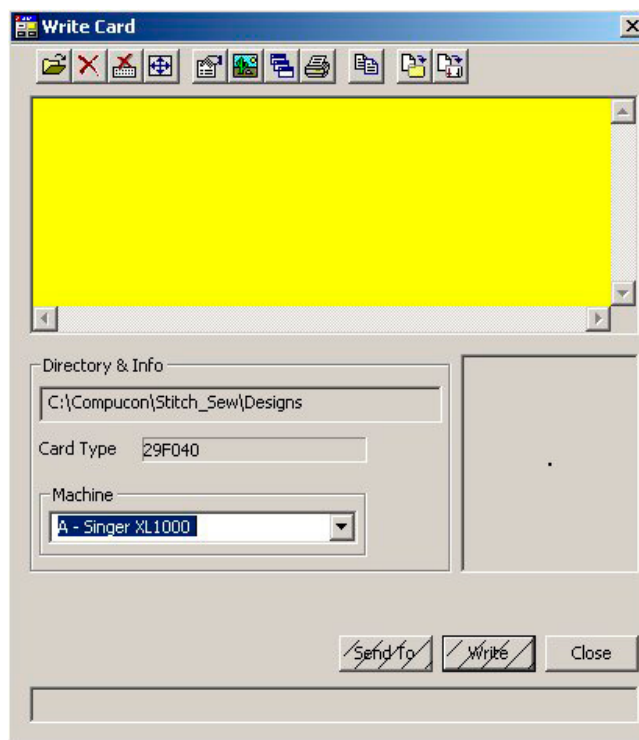
- Then, press the “Read Card” button  from the toolbar or the “Read” button  from the low right corner
- When the reading process ends, all the design files from the card will be saved in the selected directory, where they can be accessed anytime



- If you want to transfer a file directly to an embroidery software (e.g. Stitch & Sew), select the file from the directory box and press the “Transfer”  button from the toolbar

## Write Card

The Write Card option enables you to write design files to any rewriteable embroidery cards, regardless of the file format that you choose. After that, you can mount the card to your embroidery machine and sew those designs. You can also write design files to other storage media such as floppy disks and SmartMedia cards. When you select the Write Card option, the corresponding window, like the one shown below, comes up.



The Write Card window consists of the main toolbar, the file catalog, the directory & info box, the preview box, the Send To, Write and Close buttons and the status bar.

## Main toolbar



The main toolbar contains all the functions related to writing design files to any type of rewritable embroidery cards, and other storage media like floppy disks and SmartMedia cards.



**Add:** The “Add” button opens a new window, where you can select design files to write to the card



**Delete:** By pressing the “Delete” button, you delete the selected file from the list



**Delete All:** If you select the “Delete All” option, all the files included will be delete from the file list



**Size:** By pressing the “Size” button, you receive information about the remaining space of the inserted card, and the number of stitches contained in the patterns



**Properties:** It shows information on the selected design, and it enables the user to save it in different formats



**Graphics:** This option opens up a new window where all the designs included in the catalog are shown as images



**Catalog:** The Catalog option creates a catalog of all the designs included in the directory, in an HTML format



**Print:** It prints a screenshot of the screen shown currently



**Clip:** This option makes a clip of the catalog of files for Notepad



**Send To:** By pressing this button, a new window comes up where you can choose the type of storage media where you want the design files to be saved



**Write:** It writes all the files included in the file catalog, into the card

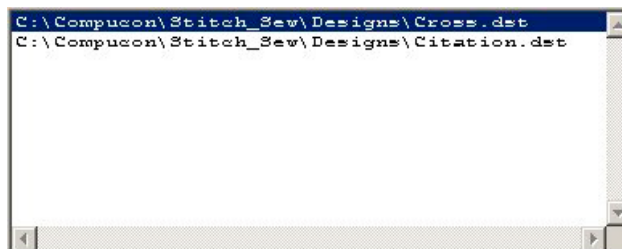
### Note

*You can add design files regardless of their file format; they will be written and recognized by the card*

### Note

*You can only insert one card at a time to the Multi-Converter. Otherwise the device will not be able to write the files to any card*

## File Catalog

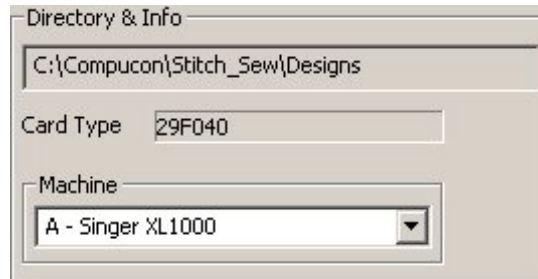


### Note

*If you have not selected any files to be added, the file catalog will be in yellow color, meaning that you have to add files to it in order to proceed.*

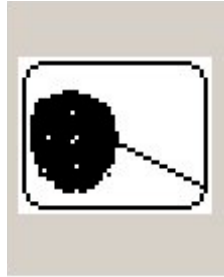
The file catalog contains all the files selected by the user in order to be written to a rewritable embroidery card or another storage media.

## Directory & Info Box



This box shows the directory from where you select the design files in order to be written to a card or another storage media. It also shows the type of the inserted card. Finally, you can select the type of embroidery machine that you use, so that the written files will be readable by your machine.

## Preview Box



The preview box shows a preview of the selected design file. The image is in black & white, just enough to give you a clue of what the design is about.

## Send To, Write and Close buttons



Although the “Send To”, the “Write Card” the “Close” options are already available on the toolbar and on the top right corner of the window, these buttons exist for reasons of ease of use.

### Note

*If there are no design files selected in the file catalog, the “Send To” and the “Write” buttons will be hatched. This means that a preceding action must be done in order these buttons to be activated.*

## Status Bar

read 00 85 00□

The status bar shows the progress in the process of writing to an embroidery card. This bar shows information only when card writing is in progress.

## How to write designs to an embroidery card or other storage media

1. With the device plugged into your computer, start the Multi-Converter utility
2. Insert the card that you want to write to, into the corresponding slot. Each slot writes to specific types of embroidery cards:

**Slot A :** Singer (XL-100, XL-1000)

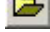
**Slot B :** Pfaff, Bernina Artista, Fairyland

**Slot C :** Janome, Elna, New Home, Kenmore

**Slot D :** Brother, Bernina Deco, Babylock, Husqvarna, Viking

3. Press the “Write Card” from the main menu

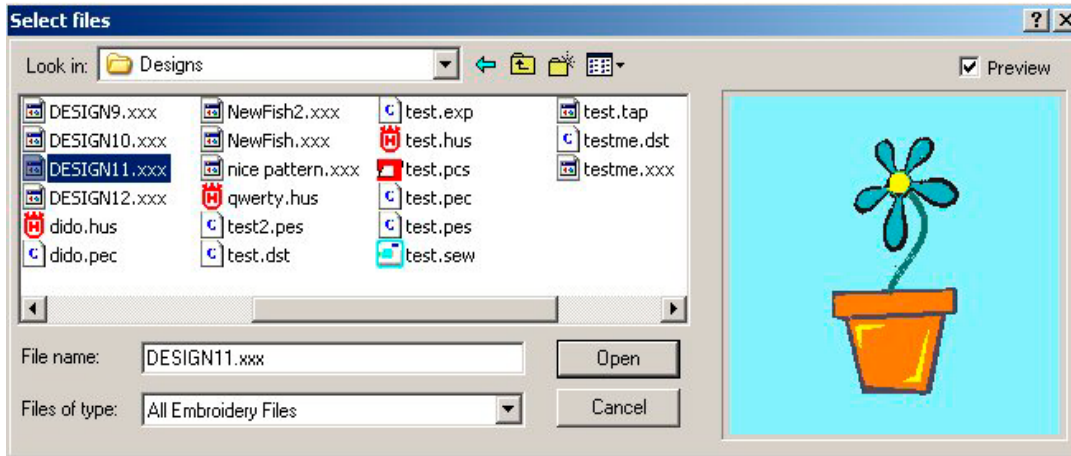
Write Card



4. Press the “Add” button  in order to select the design files that you want to write to the embroidery card or to other storage media

### Note

*You can select design files of different formats at the same time (.xxx, .dst etc.). They will be written in the card and they will be readable by the embroidery machine without any problems*

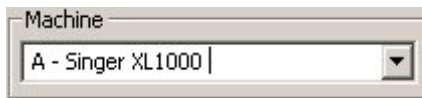
5. In the window that comes up you can select the directory and the files you want to write to the embroidery card or the other storage media. There is also a preview box so that you can view the designs before you choose






6. If you want to delete a file from the ones you added to your catalog, select the file and press the “Delete” button . If you want to delete all the files you added to your catalog press the “Delete All” button .

**If you want to write to a rewritable embroidery card:**

- 7a. When you finish adding design files, select the type of the embroidery machine where you will use the card




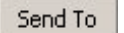
- 8a. Then, press the “Write” button from the toolbar  or the one on the low right corner of the window 

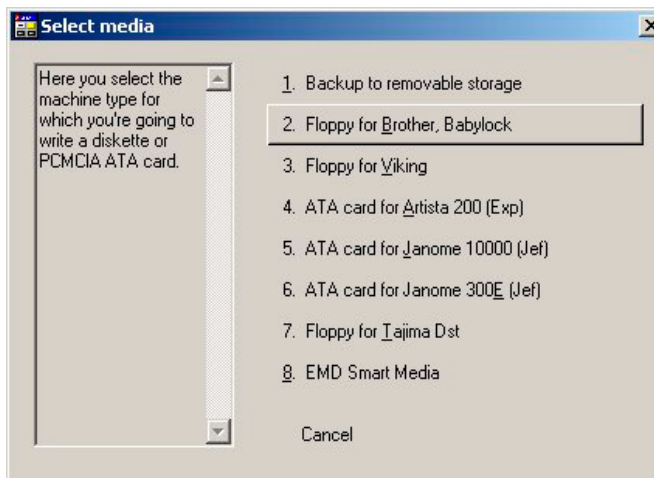
**Note** 

*If the rewritable embroidery card that you inserted in the Multi-Converter device contains design files already, those files will be overwritten.*



**If you want to write to other storage media:**

**7b.** Press the “Send To” button from the toolbar  or the one on the low right corner of the window . The following window will come up:



**8b.** From the menu above, select the type of media you want to write the files in.

**Note** 

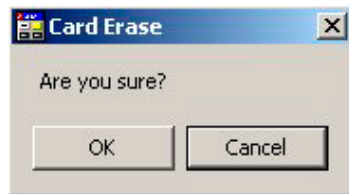
*The first option “Backup to removable storage” will backup to any removable device is specified in the Settings e.g. floppy disk or SmartMedia*

## Erase Card

The Erase Card option gives a user the ability to delete the contents of a rewritable embroidery card, in order to be able to write different designs to it. When the “Erase Card” button is pressed, the utility asks the user to insert the card.



When you insert an embroidery card and press OK, the utility double-checks if you want to erase the embroidery card by showing the message above.

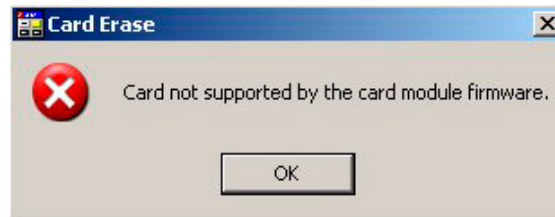


If you press OK the erasing process starts, as it is indicated in the status bar. When the operation completes the following message appears.



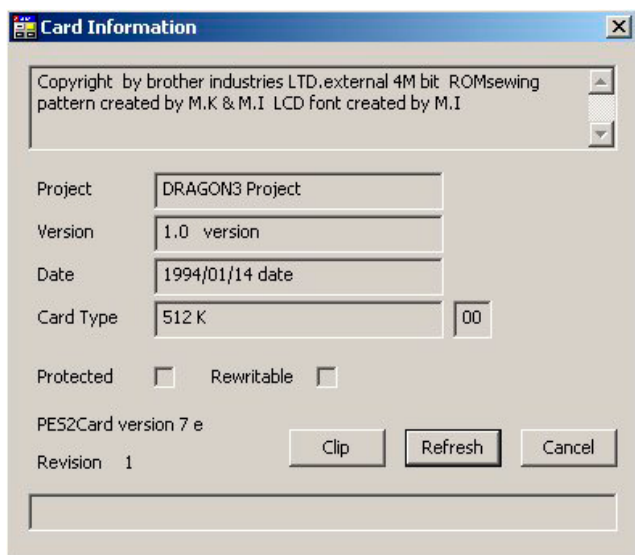
## Note

*If you insert for deletion an embroidery card which is not rewritable or it is protected, the utility will not attempt to erase it and the following message will appear.*



## Card Information

The Card Information option provides useful information for the embroidery card that you insert in the Multi-Converter device. When you insert a card and press the “Card Information” button, the device analyses the card and the following window comes up.



In this window you get general information about the card, the name of the project, the card version, the date, the card type and the indication if the card is Protected or Rewritable.

### Note

If the Card Type box shows the capacity of the card and not its type, it means that this card is not rewritable.

A rectangular button with a light beige background and a thin black border, containing the word "Clip" in a dark grey sans-serif font.

The Clip button makes all the information of the above window a clip for Notepad.

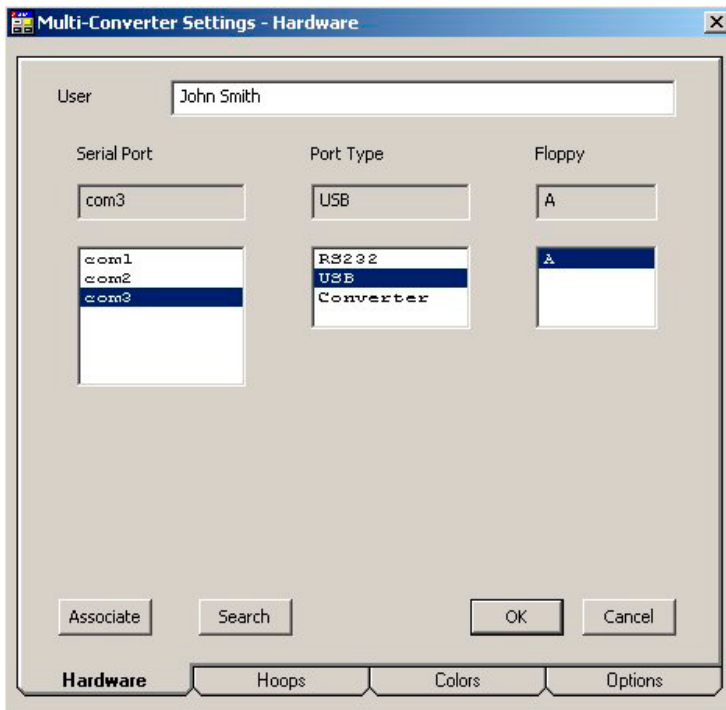
A rectangular button with a light beige background and a thin black border, containing the word "Refresh" in a dark grey sans-serif font.

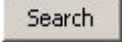
You can change the embroidery card and insert a different one when you are inside the Card Information dialog. By pressing the Refresh button, the device reads and presents the information of the newly inserted card.

# Settings

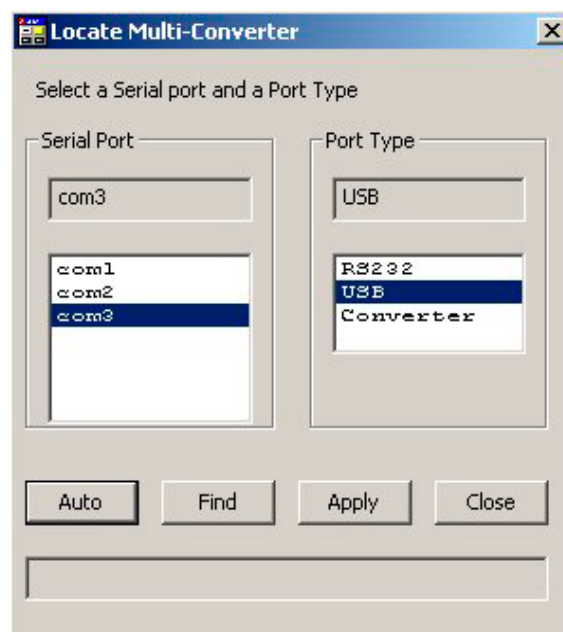
The Settings section of the Multi-Converter utility is where you define and your preferences and properties for the best use of the Multi-Converter. This section is divided to four sub-sections. These are the "Hardware", "Hoops", "Colors" and "Options" sections. In all of them, there is the "Associate" button which is an important part of the utility. Also, there is the "User" filed where the user can state his username. On the following part of this manual, there is a brief description for each of these sub-sections.

## Hardware

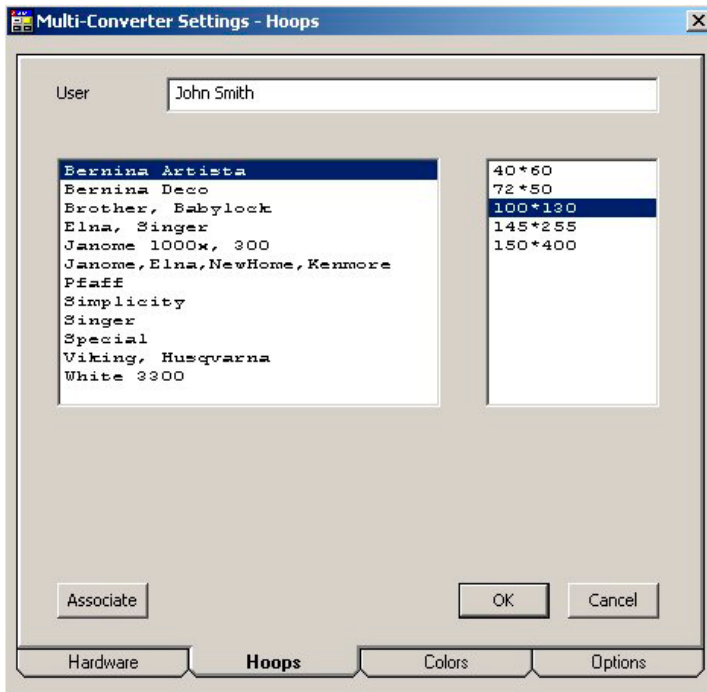


In the “Hardware” section you can set the Serial Port settings, together with the Port Type, and also define a floppy disk drive. If you are unaware of the Serial Port settings and the Port Type you use, you can do an automatic search by pressing the “Search” button .

By pressing the “Search” button a new window comes up, where you can ask for an automatic search for the port settings by pressing the “Auto” or the “Find” button. When these are found, you can press “Apply” to save these settings.



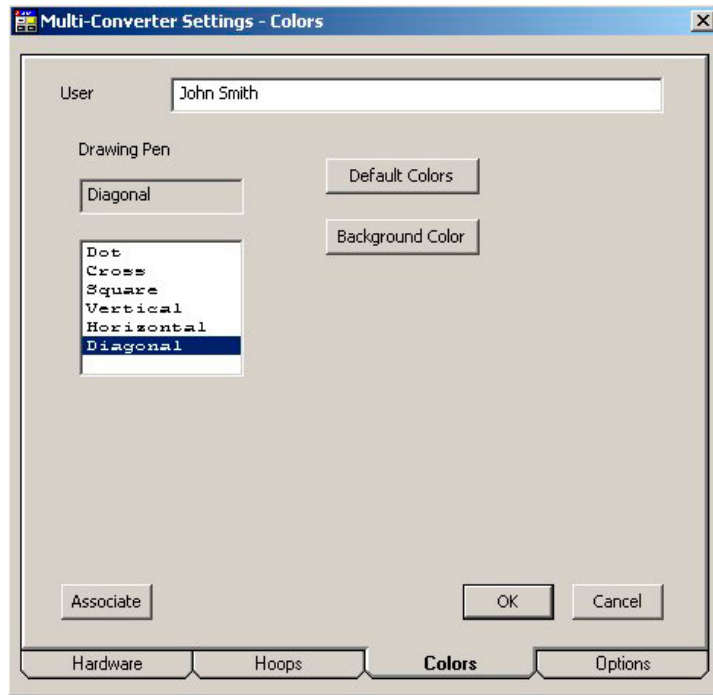
## Hoops




In the “Hoops” section you can set the hoop size that you use. On the left part of the window shown above, you can select the type of home embroidery machine that you use. On the right part of the screen, the available hoop sizes for this type of embroidery machine show up. From there, you can set the hoop size that you want to use for your designs. After you have set the hoop size, the utility will not allow a design bigger than the hoop to be written to an embroidery card, in order to help you avoid sewing errors and needle breaks.




## Colors

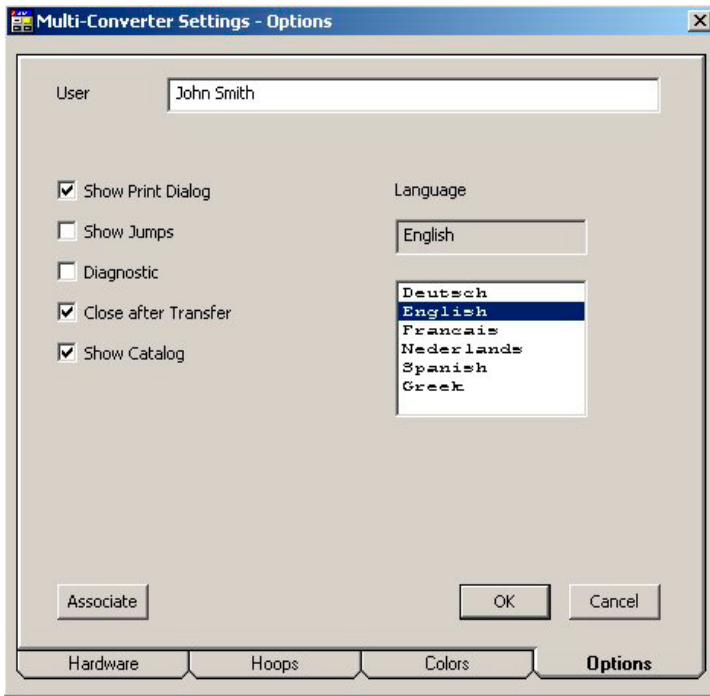


In the “Colors” section there are three options that you can define. The first one is the type of drawing pen that will be used to draw the preview images of the design files. It can be set to Dot, Cross, Square, Vertical, Horizontal and Diagonal.

The second one is the default colors that you will use. By pressing the “Default Colors” button , the Windows Color Palette comes up from where you can define custom colors.

The third one is the background color that you want to use. By pressing the “Background Colors” button , the Windows Color Palette comes up once more and you can choose the background color that you want.

## Options



The "Options" section contains miscellaneous options that are not related to the previous sections.

On the left part of the window there are the options below:

**Show Print Dialog:** Tick this if you want the Print Dialog to appear whenever you press the “Print” button.

**Show Jumps:** Tick this if you want the jump stitches to be visible in the bitmap images of the design files.

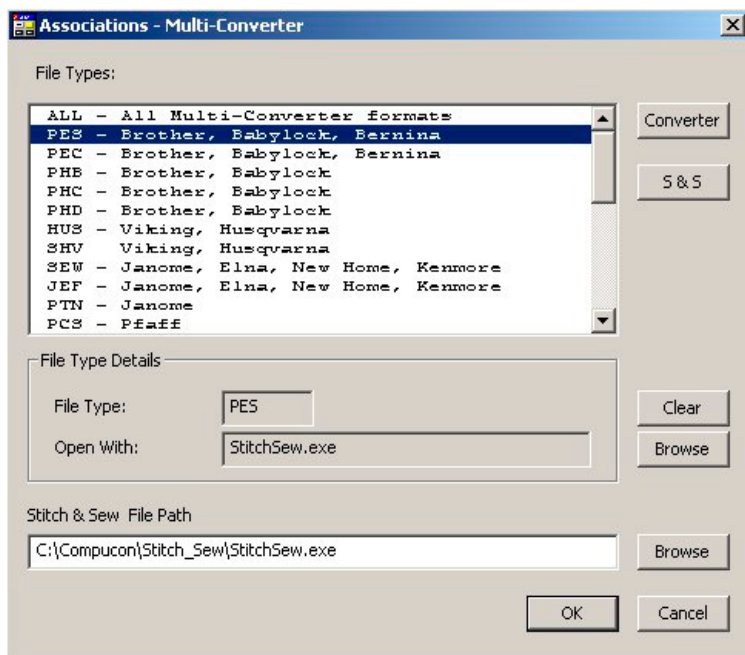
**Diagnostic:** This option is useful when you have a card that seems to be un-readable or un-writable. If you tick this, you may notice that in the “Card Information” section there is an “Identify” button now. By pressing this button, a card.tmp file is created inside the Multi-Converter utility folder. This file contains information about the card by which the developer of the device can define the cause of the cards not working.

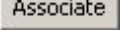
**Close after Transfer:** By ticking this, each time you select to transfer a design file to Stitch & Sew (by pressing the “Transfer” button from the Read Card window), the Read Card window will close automatically.

**Show Catalog:** Tick this option if you want a catalog of the files existing in the card to be shown each time you read a card.

On the right part of the window you can select the language that you want to use.



## Associate



As it was mentioned earlier, the “Associate” button  is available in all the sub-sections of the “Settings” button. This is why it is an important part of the utility. This is where you set which program will be associated with each embroidery file type.

By selecting a file type from the list shown above, you can select if you want this file type to be associated with the Stitch & Sew program or the Multi-Converter's own utility. This means that if for example you select the PEC format to be associated with Stitch & Sew, each time you press the "Transfer" button from the Read Card with a PEC file selected, this file will be automatically transferred to the Stitch & Sew program.

You may notice that in the list above, there is an "ALL – All Multi-Converter formats" option. If you select this, you can associate all the embroidery file formats to the program that you will select.

In the File Type Details you can set any embroidery software you want the selected file type to be associated with. Like shown in the screenshot below, you can set the file path of the embroidery software by pressing the "Browse" button , or clear the selection by pressing the "Clear" button .



File Type Details

File Type: PES

Open With: StitchSew.exe

Finally, you can set the file path of the Stitch & Sew utility by pressing the "Browse" button, in the section shown below.



Stitch & Sew File Path

C:\Compucon\Stitch\_Sew\StitchSew.exe

## Multi-Converter and Stitch & Sew

Although the Multi-Converter device works as a standalone as well, it is generally recommended to use it in collaboration with the Stitch & Sew software, a unique software designed especially for the Home Embroidery user.” Therefore, you can set all the file formats which are readable by Stitch & Sew to associate with this program, as it is mentioned in the paragraph above.

The advantage you get when associating with Stitch & Sew is that you can start the Multi-Converter utility directly from Stitch & Sew and send the files that you want to be written to an embroidery card or other storage media.

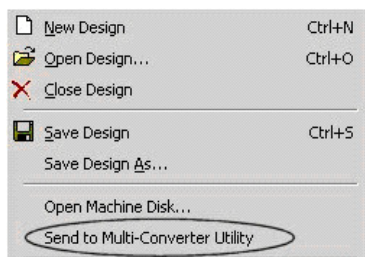
When you open a design (or designs) in Stitch & Sew and you want to write it to an embroidery card, you simply select the “Send to Multi-Converter Utility” option that exists in the File menu.

In Stitch & Sew, go to File and select “Send to Multi-Converter Utility”.

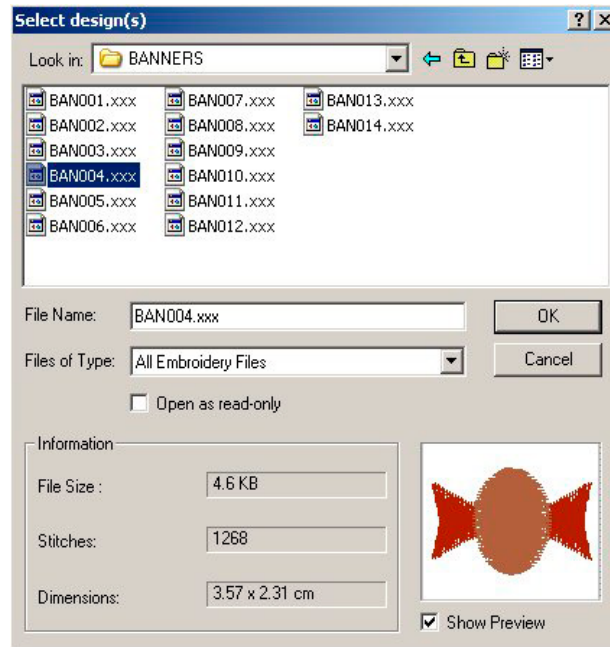


### Tip!

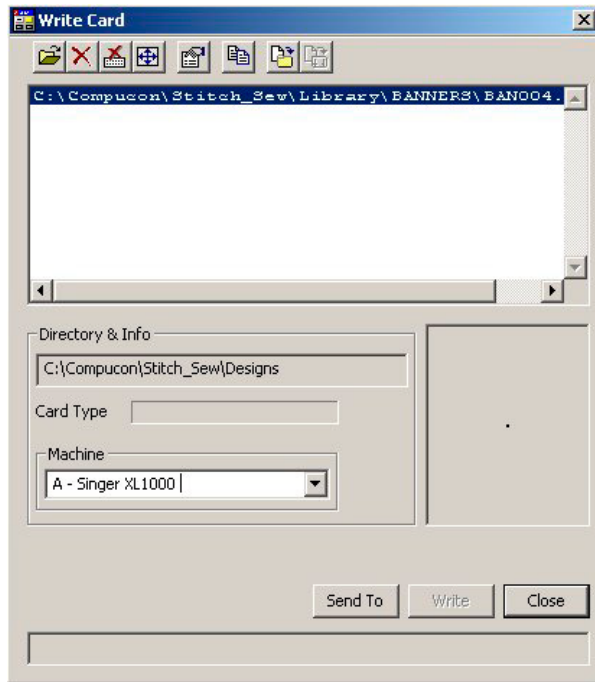
Ask your local dealer for further information on the ‘Stitch & Sew’ software or check out its website at [www.stitch-sew.com](http://www.stitch-sew.com) to find out more about the capabilities and advanced functionality of this very special software !



A new window will open, where you will be able to select the file or files you want to write to an embroidery card with the Multi-Converter utility.




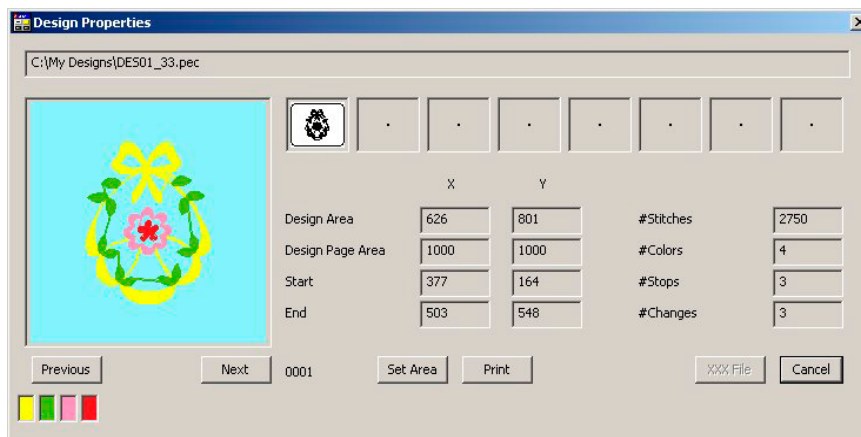
When you select the files you want and press OK, the Multi-Converter utility will start automatically and the selected files will be added to the Write To catalog as shown below.





## Design Properties

On the toolbar of both “Read Card” and “Write Card” windows, there is a button called “Properties” . By pressing it, you enter the properties of the selected design file. A new window like the one below comes up.



Inside the “Design Properties” window you can see the path of the selected file, a preview of the design, design area information, number of stitches, colors, stops and changes, and thread colors. If the design is a multi-hoop design, each hoop will be previewed in a different box (the small ones on the top of the window).

**Print**

By pressing the “Print” button you can print a screenshot of the whole window.

Previous

Next

The “Previous” and “Next” buttons move you from one design file to another.

Set Area

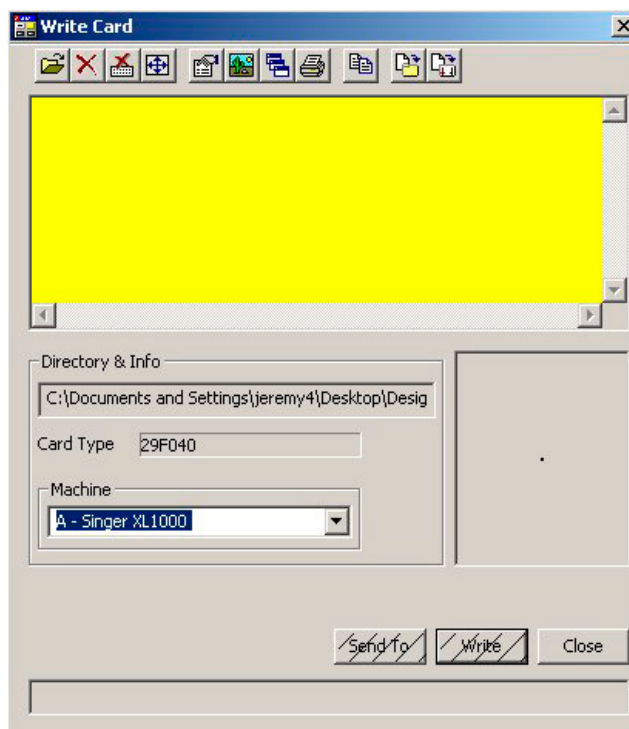
The “Set Area” button is only useful for Brother which has this functionality for positioning designs. For example, suppose you have a 4\*4 design and you want that in the corner. Given your hoop is 10\*10, you claim the design is 10\*10. Now you can move the design around in the Brother software and position it anywhere. Once you’re happy with its position, you save it. However, you cannot move the design as you fixed it by saying it is 10\*10 and not 4\*4 as the real design is. Set Area gets rid of the 10\*10 and makes the design 4\*4 again and now you are able to put it where you like it as you can move the design around in the 10\*10 hoop which was earlier not possible.

XXX File

The “XXX file” button, converts the selected design file automatically in XXX format. This is helpful for design files which are not readable by Stitch & Sew. By using this button you are able to transfer these files directly to Stitch & Sew, and work without any problems.

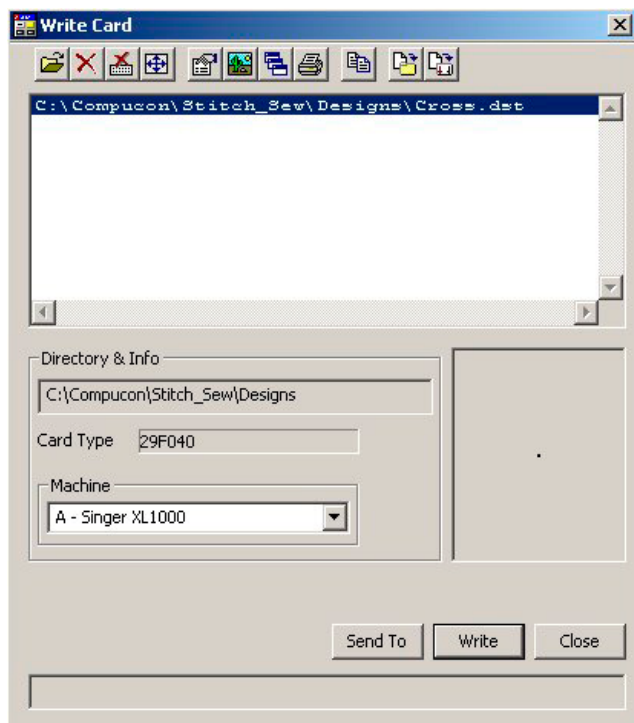
## Button and dialog box conditions

Buttons and dialog boxes inside the Multi-Converter utility can be seen in different conditions in different occasions.

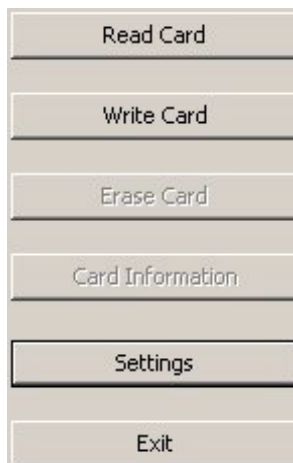


As you may notice in the above window, the file catalog is in yellow color, the “Send To” and the “Write” buttons are hatched, while the “Close” button is active (it can be pressed).

In this occasion, no files are currently selected for writing to an embroidery card or other storage media. This is why the “Send To” and “Write” buttons are hatched. The yellow color on the file catalog indicates that in order these buttons to become active, you need to add file to the file catalog. If you add files to the catalog, then it becomes white and the buttons become active, like in the screenshot below.

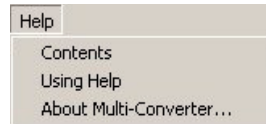


Buttons can be met in another condition as well. In the screenshot below, you may notice that the “Erase Card” and the “Card Information” buttons are grayed, meaning that they are inactive (they can not be pressed). This occurs when the Multi-Converter device is not connected on the computer, and therefore no cards can be erased or examined.

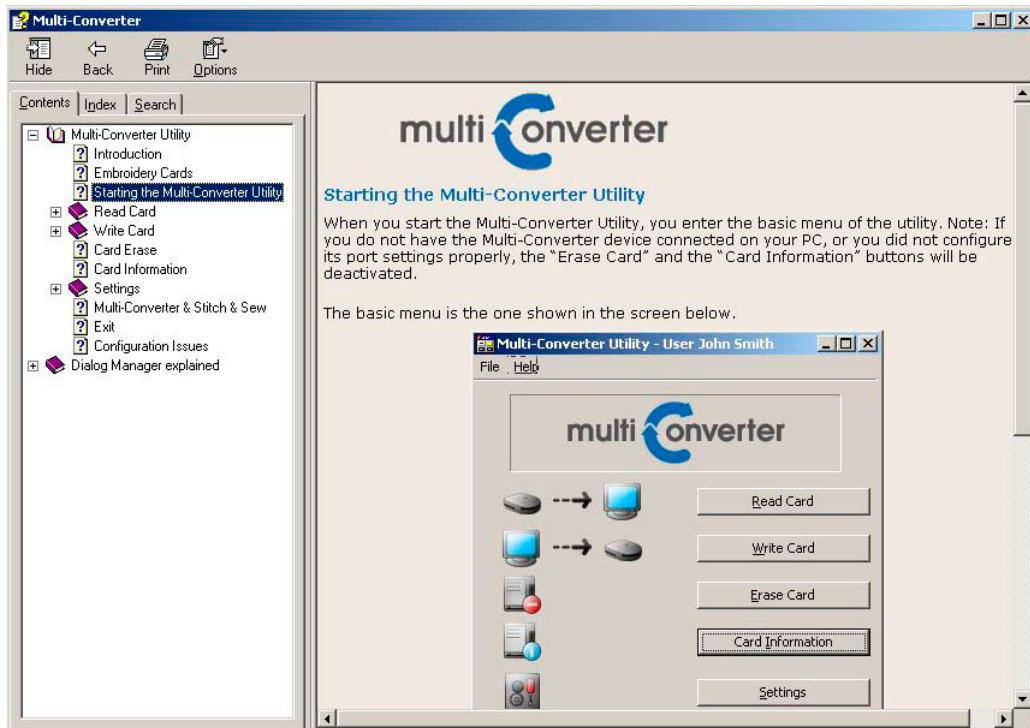


# Help Menu

The Help Menu in the Multi-Converter utility provides useful information and tips about the Multi-Converter and its features. It consists of three buttons as it is shown below.



In the “Contents” section you can find all the contents that exist in the help file of the utility. Therefore, you can look up help topics that interest you and read about them.



The “Using Help” section provides the option of using a search engine to look for specific topics in the help file.

Finally, the “About Multi-Converter...” section provides information about the utility, like the version number and the current Windows version installed.







multi  onverter